

***Export Competiveness of Combed Cotton Content  
HS 520524: (>85% 30.73-47.28)***



**GLOBAL  
TRADE  
ANALYSIS**

*P Nayak  
T.K. Rout  
Deepti Lahane*

**DR P. NAYAK**  
Secretary  
Textiles Committee  
Mumbai - 400 025

## **Preface**

The Textiles Committee has been providing valuable databases on different facts of T&C industry to the industry stakeholders and policy makers for deriving well informed policy decision & business strategy. Due to the onslaught of RTA, FTA & Multilateral Trade Agreements under the framework of WTO, the competition among the textile exporting countries has also been growing giving rise to challenges in the form of price and quality competitiveness. To deal with the situation successfully countries, may requires comprehensive product wise database on production, export, import, cost competitiveness etc.

In order to support the trade & industry through analysis and dissemination, the Textiles committee is preparing a comprehensive database on the different facets of the textiles sector like production, demand, exports, cost of production, tariffs etc. , through Market Intelligence in Textiles (MIT).

This discussion paper “Export Competiveness of Combed Cotton Content HS 520524: (>85% 30.73-47.28)” attempts to delineate the global players in this product through their global exports, imports vis-e-vis India. Efforts are made to present the information in user friendly format. I hope this paper will be useful to the readers and help in understanding the international trade in Cotton Yarn (HS 520524) in a better way. The valued suggestions and comments from the readers are welcome.

I appreciate the efforts put in by Shri T.K Rout, Deputy Director, Ms Deepti Lahane, Research Associate and the team of researcher who have been instrumental to bring out this data base series.

Place: Mumbai

(Dr. P. Nayak)

# Contents

<b>S. No</b>	<b>Particulars</b>	<b>Page No.</b>
I.	Introduction	1
II.	Objective	1
III.	Methodology	1
IV.	Limitations	1
V.	Top exporters of 520524 (Value and Volume wise analysis)	2-4
VI.	Top importers of 520524 (Value and Volume wise analysis)	5-7
VII.	Importance in Cotton Yarn basket	8-12
	Analysis for Importance	8
	Market share of top exporters in top import markets	9
	UVR of top exporters in top import destinations	9
	Top exporters CAGR in top Import markets	10
	Top exporters RCA (2004-12)	11
	Top exporters UVR (2004-12)	11
VIII.	Target countries for Export	12
IX.	Findings	13

# List of tables and figures

S. No	Table/ Figure Particulars	Page No.
Table 1.1	Top exporters of 520524 value wise (2004-2012)	2
Figure (a)	Graphical representation of top exporters of 520524 value wise (Mn USD)	2
Figure (b)	Performance of top exporters of 520524 from 2004-2012 (Value wise)	3
Table 1.2	Top exporters of 520524 volume wise	3
Figure (c)	Graphical representation of top exporters of 520524 volume wise (Mn Kg)	4
Figure (d)	Performance of top exporters of 520524 from 2004-2012 (Volume wise)	4
Table 1.3	Top importers of 520524 value wise	5
Figure (e)	Graphical representation of top importers of 520524 value wise (Mn USD)	5
Figure (f)	Performance of top importers of 520524 from 2004-2012 (Value wise)	6
Table 1.4	Top importers of 520524 volume wise	6
Figure (g)	Graphical representation of top importers of 520524 volume wise (Mn Kg)	7
Figure (h)	Performance of top importers of 520524 from 2004-2012 (Volume Wise)	7
Table 1.5	Analysis for Importance of 520524 in Cotton Yarn Basket of top Importers: 2012 (Value in Mn USD)	8
Table 1.6	Market Share (%) of top exporters in top Import markets :2012	9
Table 1.7	UVR of Top Exporters in top import destinations: 2012	9
Table 1.8	Top exporters CAGR in Top importers market (2004-2012)	10
Table 1.9	Top exporters RCA in 520524 in the world (2004-2012)	11
Table 1.10	UVR of Top exporters in 520524 in the world (2004-2012)	11
Table 1.11	Target countries for export in the world (Value in Mn USD)	12

## **I. Introduction**

- The product 520524 belongs to the combed cotton yarn segment having cotton content more than 85% and a count of 30.73-47.28. It has a percentage share of 9.65% in total cotton yarn imports in the world.
- The total export value of this product in the world is 1468.63 Mn USD (2012) and the total import value is 1154.77 Mn USD (2012). India is the leading exporter of this product in the world with an export value of 669.69 Mn USD (2012) and a market share of 45.60%. China stands at number 2 position with an export value of 284.24 Mn USD (2012) and a market share of 19.35%.

## **II. Objective**

1. To understand the importance of 520524 in world cotton yarn trade.
2. To study the performance of top exporters and top importers of 520524 in the world.
3. To study the performance of top exporters in top import markets.
4. To find out target countries for export of 520524 in terms of volume and growth of market.

## **III. Methodology**

- To fulfil the above objectives, we will consider the parameters of CAGR, % Share, RCA and UVR. The period taken into consideration is from 2004-2012.
- The data has been collected from various secondary sources like WITS, Ministry of Textiles, and Office of Textile Commissioner etc.
- The generated tables have been illustrated through the help of graphs/pie-charts/histograms wherever required.

## **IV. Limitations**

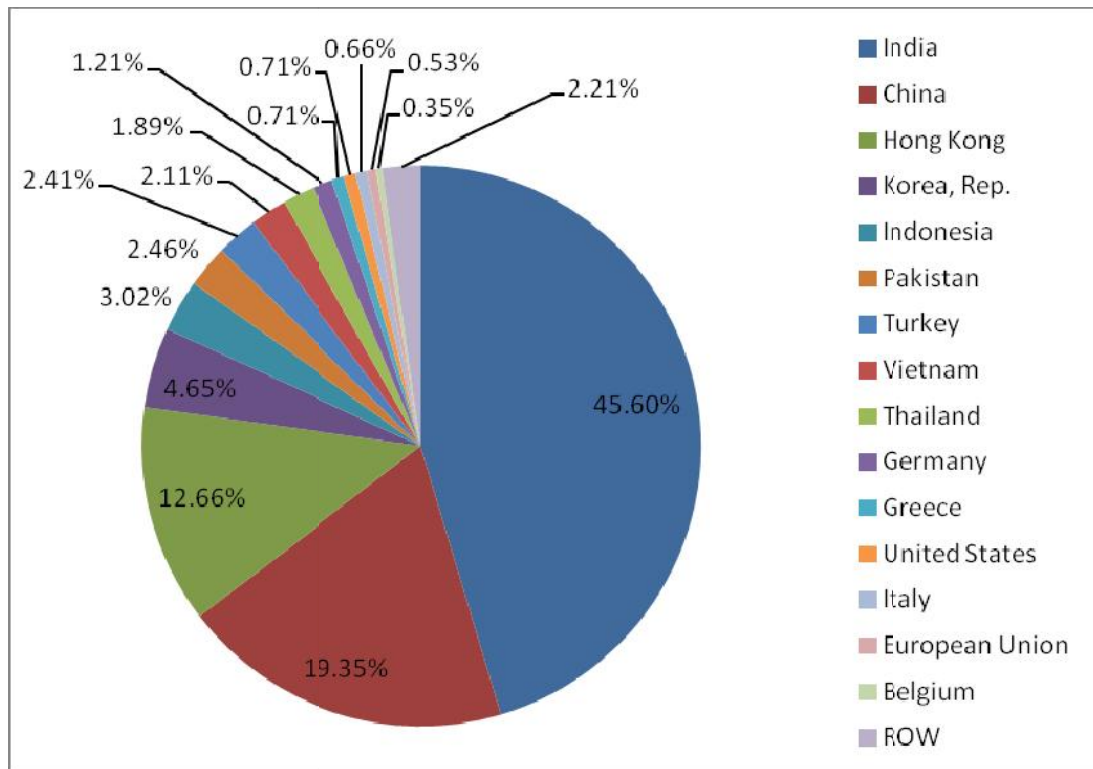
- The sources of data are limited to secondary sources of collection like internet, international trade data websites, published reports etc. Therefore the accuracy of the report depends on the data collected from the secondary sources.
- There are only two sites available for export import data in international trade - WITS and ITC, Geneva. There is no other available source to validate the data collected from these sites. Hence, we have assumed that the export import figures as reported by these two websites are genuine and correct.
- The export import data collected from these websites show a significant gap, as in the export figure reported by the exporting country is not equal to the import figure reported by the importing country. Due to such differences, it is difficult to estimate the actual growth in exports/imports.
- Also, some of the data are missing for certain countries which do not allow us to present a clear trade picture.

## V. Top Exporters (Value wise in Mn USD)

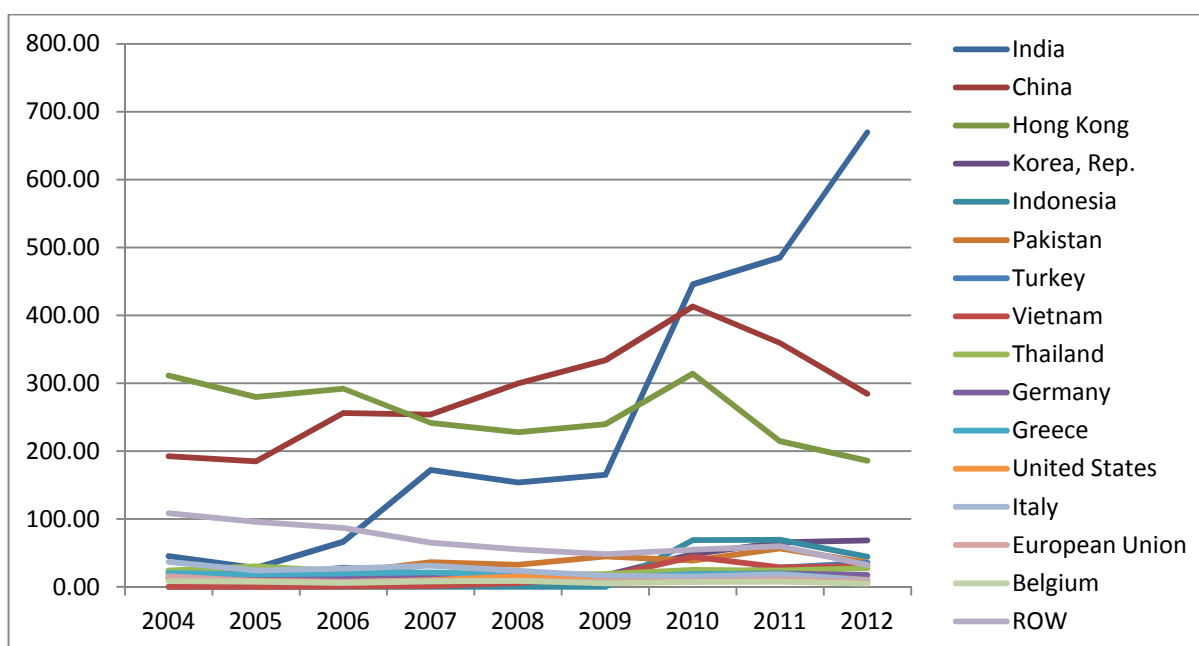
Table 1.1- Top Exporters of 520524 (Value Wise in Mn USD)

Top Exporters	2004	2005	2006	2007	2008	2009	2010	2011	2012	% Share	CAGR
India	45.25	28.09	66.76	172.37	154.11	165.40	445.59	485.51	669.69	45.60	40.05%
China	192.37	185.01	256.31	253.60	299.73	333.96	413.37	359.28	284.24	19.35	5.00%
Hong Kong	311.53	279.63	291.83	241.72	227.92	239.75	314.14	214.46	185.89	12.66	-6.25%
Korea, Rep.	23.23	25.28	13.24	16.78	15.32	17.22	48.04	65.51	68.36	4.65	14.45%
Indonesia	NA	NA	NA	NA	NA	NA	68.81	69.25	44.36	3.02	-19.70%
Pakistan	18.05	26.76	20.79	36.61	32.47	45.16	38.65	56.74	36.11	2.46	9.05%
Turkey	13.56	15.12	28.42	19.52	19.62	12.91	15.09	28.64	35.41	2.41	12.75%
Vietnam	NA	NA	0.63	1.35	6.05	15.45	44.51	29.02	30.96	2.11	91.35%
Thailand	24.20	30.56	23.21	20.54	17.48	18.88	25.10	24.40	27.71	1.89	1.70%
Germany	12.94	12.68	15.47	13.71	14.00	12.72	18.56	19.95	17.83	1.21	4.09%
Greece	20.34	18.74	19.99	21.18	18.72	13.49	19.16	19.68	10.45	0.71	-7.99%
United States	11.87	8.94	7.28	10.22	15.69	8.57	10.04	17.07	10.40	0.71	-1.64%
Italy	36.75	24.28	26.89	31.27	23.68	16.80	15.39	18.41	9.74	0.66	-15.30%
European Union	15.97	8.51	7.90	9.21	8.72	7.51	8.67	11.18	7.73	0.53	-8.66%
Belgium	8.45	7.56	5.79	8.05	8.96	5.52	7.10	7.92	5.08	0.35	-6.17%
ROW	108.77	95.97	86.97	65.11	55.14	48.16	55.02	60.27	32.41	2.21	-14.04%
World	827.31	758.60	863.58	912.02	908.89	953.98	1538.57	1476.12	1468.63	100.00	7.44%

Figure (a) - Graphical representation of top exporters of 520524 (Market Share Value wise)



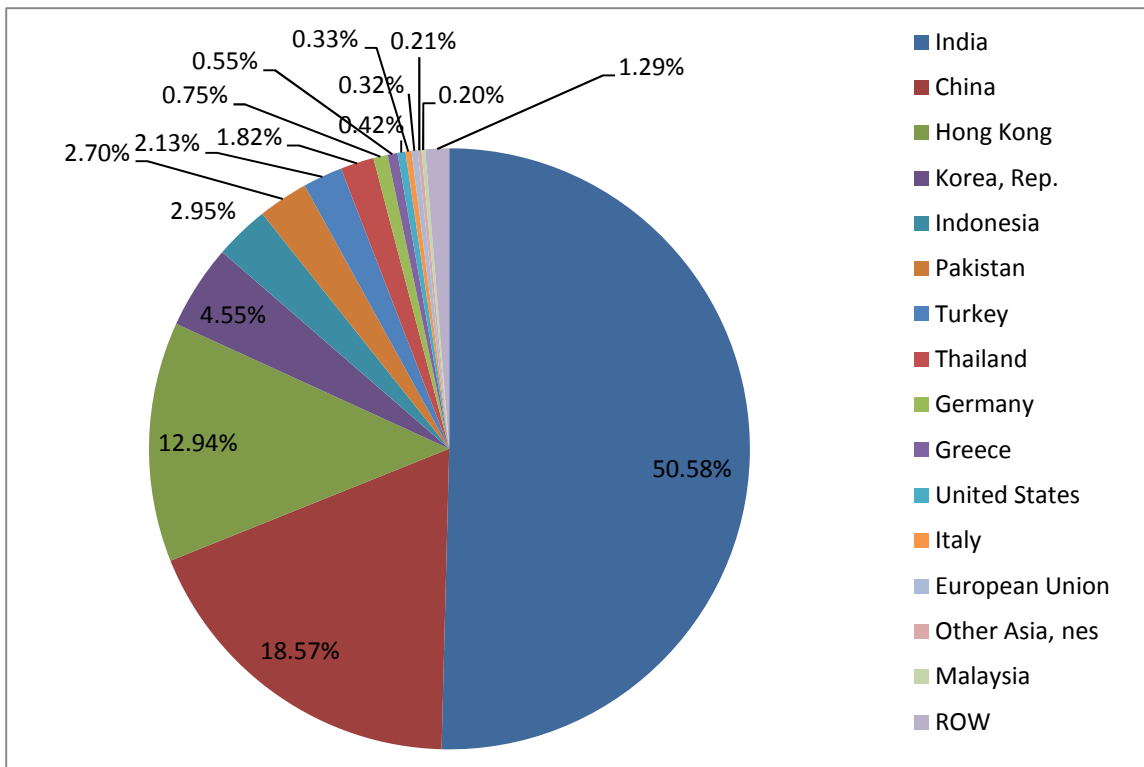
**Figure (b) – Performance of top exporters of 520524 from 2004-2012 (Value wise)**



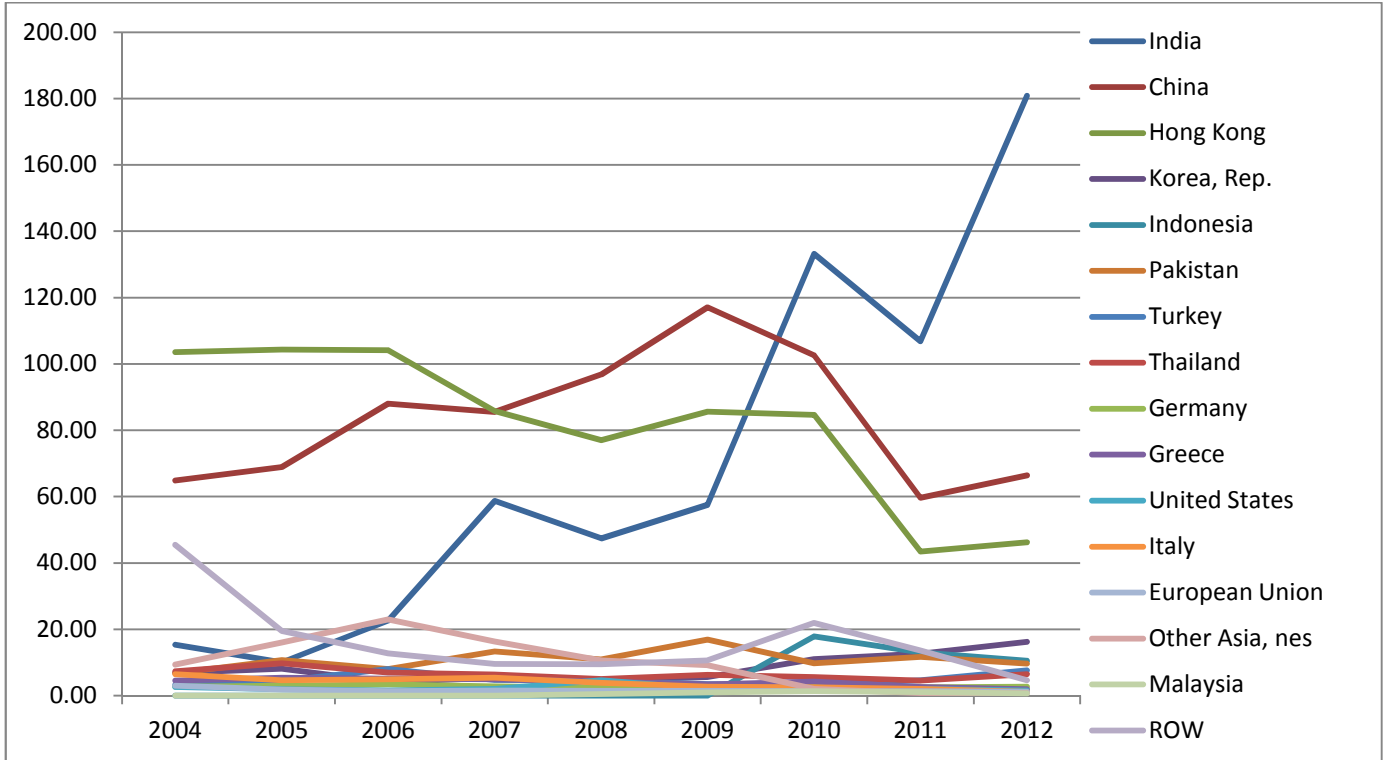
**Top Exporters (Volume Wise in Mn Kg)**

Top Exporters	2004	2005	2006	2007	2008	2009	2010	2011	2012	% Share	CAGR
India	15.40	10.05	22.60	58.72	47.39	57.57	133.17	106.82	180.87	50.58	36.06%
China	64.83	68.94	88.03	85.48	96.85	117.06	102.64	59.69	66.40	18.57	0.30%
Hong Kong	103.59	104.34	104.13	85.79	76.99	85.59	84.63	43.48	46.26	12.94	-9.59%
Korea, Rep.	6.88	8.16	4.07	5.46	4.62	5.59	11.01	12.66	16.26	4.55	11.35%
Indonesia	NA	NA	NA	NA	NA	NA	17.86	13.01	10.56	2.95	-23.12%
Pakistan	6.81	10.71	7.98	13.36	10.88	16.95	9.73	11.69	9.67	2.70	4.48%
Turkey	3.34	4.48	8.01	4.75	4.59	3.46	3.29	4.68	7.62	2.13	10.87%
Thailand	7.35	9.73	6.97	6.37	4.99	6.24	5.64	4.53	6.49	1.82	-1.54%
Germany	2.76	3.04	3.44	2.86	2.43	2.37	3.27	2.49	2.70	0.75	-0.27%
Greece	4.55	5.43	5.16	4.91	4.22	3.39	4.30	2.58	1.96	0.55	-10.01%
United States	2.61	1.98	1.55	2.00	4.69	2.04	1.85	2.09	1.51	0.42	-6.57%
Italy	6.50	4.67	4.89	5.43	3.91	2.76	2.50	2.00	1.18	0.33	-19.17%
European Union	2.96	1.86	1.40	1.57	1.45	1.46	1.35	1.36	1.14	0.32	-11.28%
Other Asia, nes	9.42	16.06	22.97	16.28	10.67	9.16	2.06	0.74	0.74	0.21	-27.25%
Malaysia	NA	NA	NA	NA	0.47	0.99	1.39	1.04	0.73	0.20	11.63%
ROW	45.47	19.54	12.74	9.58	9.43	10.64	21.96	13.64	4.62	1.29	-24.86%
World	279.51	267.15	292.55	300.99	282.14	323.82	405.29	281.14	357.57	100.00	3.13%

**Figure (c) - Graphical representation of top exporters of 520524 (Market Share Volume wise)**



**Figure (b) – Performance of top exporters of 520524 from 2004-2012 (Volume wise)**



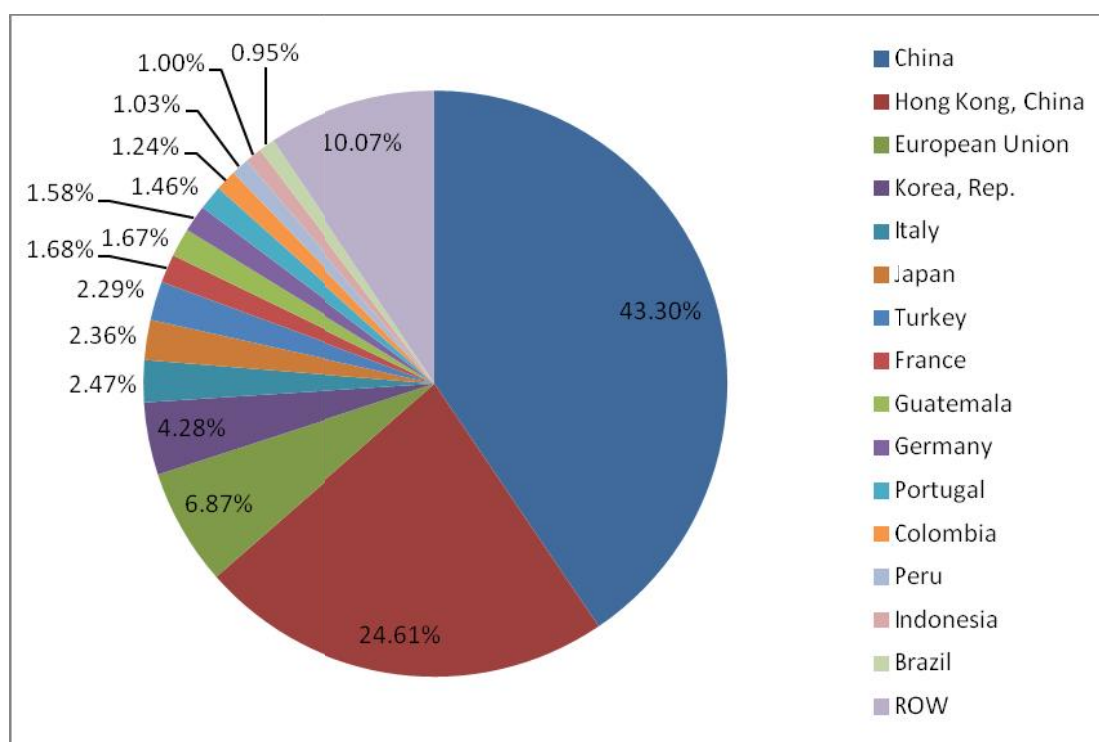


## VI. Top Importers (Value wise in Mn USD)

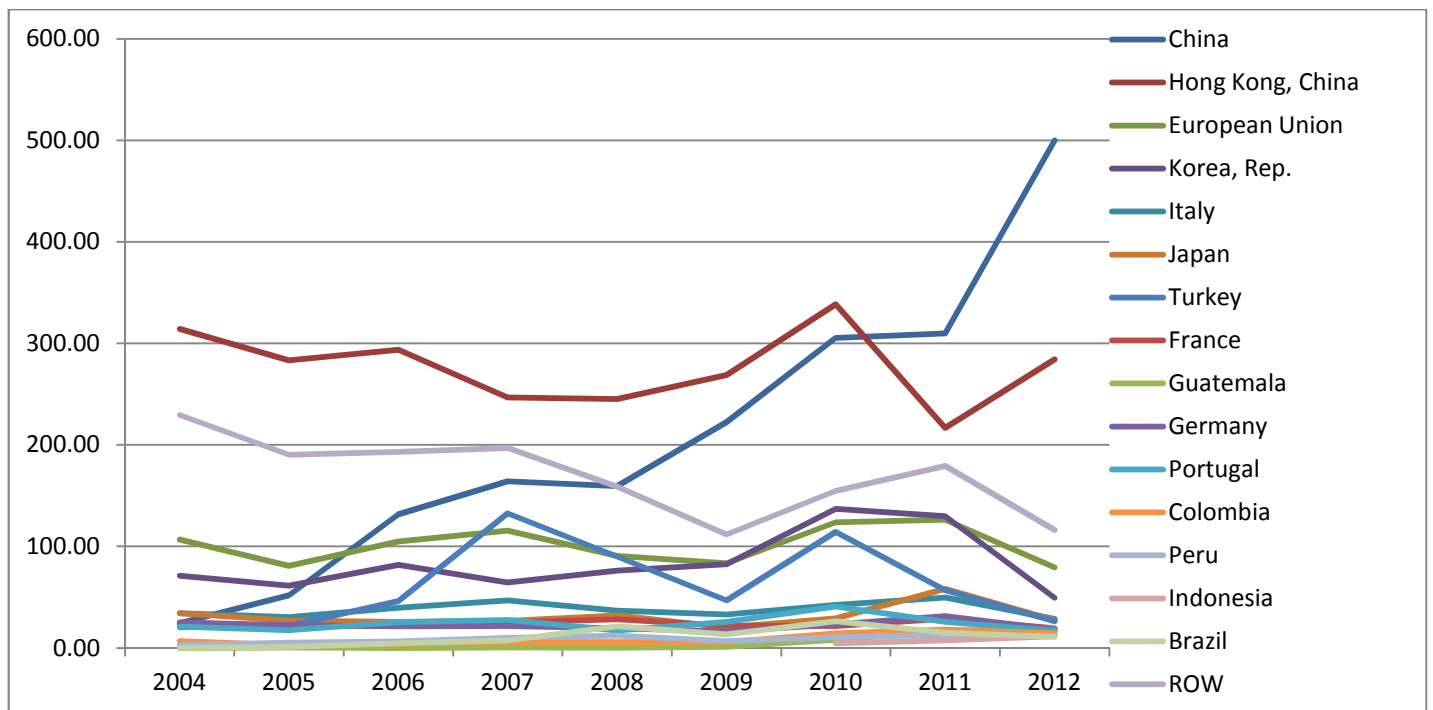
Table 1.3- Top Importers of 520524 (Value wise in Mn USD)

Top Importers	2004	2005	2006	2007	2008	2009	2010	2011	2012	% Share	CAGR
China	24.59	52.04	131.73	164.23	159.30	222.53	305.35	309.76	500.01	43.30	45.72%
Hong Kong	314.05	283.30	293.71	246.77	245.21	268.84	338.60	216.80	284.25	24.61	-1.24%
European Union	106.64	80.83	104.85	115.65	90.68	83.49	123.65	126.26	79.33	6.87	-3.63%
Korea, Rep.	71.16	61.27	81.90	64.60	76.18	82.62	136.90	129.91	49.42	4.28	-4.45%
Italy	34.22	30.47	39.52	46.72	36.83	33.05	42.48	49.55	28.53	2.47	-2.25%
Japan	34.16	27.11	25.65	26.63	31.99	20.44	29.31	58.16	27.29	2.36	-2.77%
Turkey	20.44	22.07	46.27	132.61	90.08	46.97	114.34	57.06	26.44	2.29	3.27%
France	25.09	21.43	21.95	24.98	28.36	22.03	21.50	28.80	19.41	1.68	-3.16%
Guatemala	0.02	0.35	0.01	0.37	0.34	1.15	8.08	17.01	19.34	1.67	138.28%
Germany	25.14	22.65	21.19	21.75	19.42	16.39	23.16	31.48	18.26	1.58	-3.92%
Portugal	21.15	17.46	25.37	27.49	17.34	25.80	40.94	25.84	16.83	1.46	-2.82%
Colombia	6.68	2.65	3.92	5.85	5.76	6.00	14.51	18.12	14.30	1.24	9.98%
Peru	3.07	5.25	6.51	10.07	12.26	6.79	10.72	12.66	11.91	1.03	18.47%
Indonesia	NA	NA	NA	NA	NA	NA	4.63	7.34	11.56	1.00	58.00%
Brazil	0.09	1.04	4.71	7.50	21.26	13.31	26.37	15.16	10.94	0.95	83.36%
ROW	229.41	190.31	193.26	196.86	158.74	111.92	154.55	179.36	116.29	10.07	-8.14%
World	809.25	737.38	895.70	976.44	903.08	877.83	1271.45	1156.99	1154.77	100.00	4.54%

Figure (e) - Graphical representation of top importers of 520524 (Market Share Value wise)



**Figure (f) – Performance of top importers of 520524 from 2004-2012 (Value wise)**

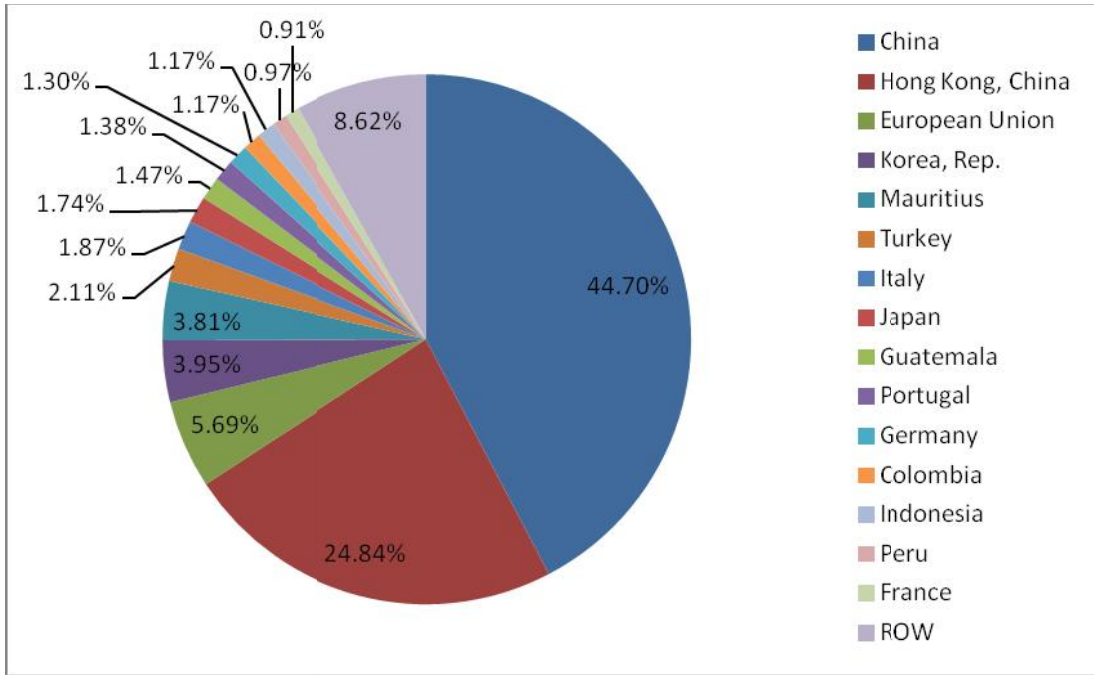


**Top Importers (Volume wise in Mn Kg)**

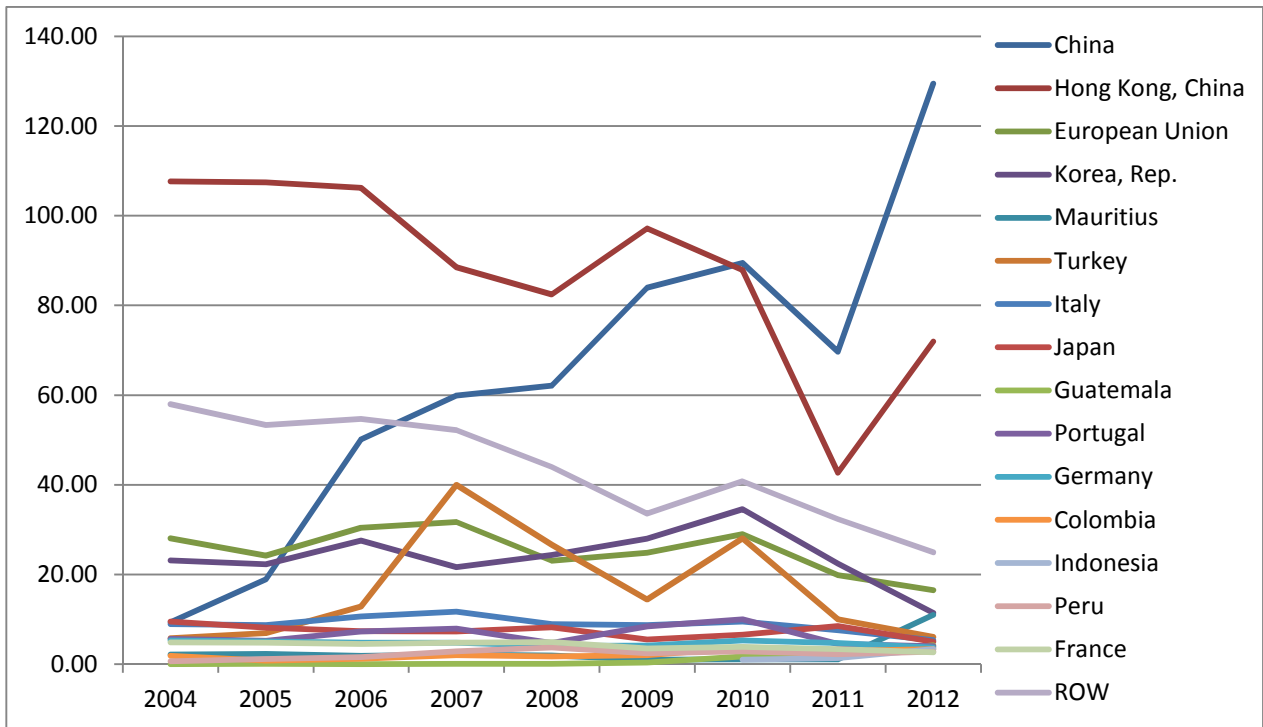
**Table 1.4- Top Importers of 520524 (Volume wise in Mn USD)**

Top Importers	2004	2005	2006	2007	2008	2009	2010	2011	2012	% Share	CAGR
China	9.37	18.90	50.15	59.92	62.11	83.94	89.45	69.66	129.42	44.70	38.85%
Hong Kong	107.66	107.45	106.19	88.54	82.45	97.15	87.87	42.73	71.93	24.84	-4.92%
European Union	28.03	24.18	30.43	31.69	23.09	24.83	28.96	19.85	16.47	5.69	-6.43%
Korea, Rep.	23.11	22.25	27.54	21.67	24.34	27.98	34.58	22.46	11.45	3.95	-8.41%
Mauritius	2.19	2.30	1.90	2.13	1.97	1.04	1.09	1.07	11.03	3.81	22.39%
Turkey	5.77	6.96	12.85	40.00	26.62	14.41	28.06	10.01	6.10	2.11	0.71%
Italy	8.94	8.71	10.68	11.70	8.95	8.70	9.48	7.56	5.41	1.87	-6.10%
Japan	9.52	8.18	7.35	7.33	8.23	5.52	6.56	8.55	5.02	1.74	-7.68%
Guatemala	0.00	0.11	0.00	0.10	0.09	0.37	1.76	2.02	4.25	1.47	144.60%
Portugal	5.64	5.20	7.32	7.95	4.72	8.47	10.03	4.52	3.99	1.38	-4.23%
Germany	5.28	5.10	4.82	4.82	4.08	4.14	5.30	4.75	3.75	1.30	-4.18%
Colombia	1.87	0.83	1.22	1.98	1.76	2.00	3.63	2.94	3.39	1.17	7.70%
Indonesia	NA	NA	NA	NA	NA	NA	1.03	1.35	3.38	1.17	81.09%
Peru	0.67	1.17	1.61	2.85	3.70	2.48	2.85	2.22	2.79	0.97	19.44%
France	4.88	4.81	4.50	4.77	4.96	3.50	3.86	3.37	2.63	0.91	-7.42%
ROW	57.98	53.29	54.70	52.18	43.96	33.57	40.75	32.35	24.95	8.62	-10.00%
World	242.89	245.27	290.83	305.95	277.93	293.28	326.30	215.58	289.51	100.00	2.22%

**Figure (g) - Graphical representation of top importers of 520524 (Market Share Volume wise)**



**Figure (h) – Performance of top importers of 520524 from 2004-2012 (Volume wise)**



## VII. Importance in Cotton Yarn Basket and Global competitiveness

Table 1.5-Analysis for Importance of 520524 in Cotton Yarn Basket of top Importers: 2012 (Value in Mn USD)					
Top 10 CY importers	Total CY Import Value (Mn USD)	Total Import of 520524 (Mn USD)	% Share of 520524 in Product Basket	Average Imports (2010-2012)	CAGR (2004-2012) for World Import of 520524
China	4952.82	500.01	10.10%	371.71	45.72%
Hong Kong	1511.08	284.25	18.81%	279.88	-1.24%
European Union	1116.23	79.33	7.11%	109.75	-3.63%
Korea Republic	584.53	49.42	8.46%	105.41	-4.45%
Turkey	344.73	26.44	7.67%	65.95	3.27%
Russia	288.75	8.77	3.04%	4.90	47.70%
Japan	271.39	27.29	10.05%	38.25	-2.77%
Germany	248.67	18.26	7.34%	24.30	-3.92%
Egypt	238.27	1.08	0.45%	0.79	0.62%
Guatemala	212.84	19.34	9.09%	14.81	138.28%
Portugal	211.41	16.83	7.96%	27.87	-2.82%
US	164.79	7.07	4.29%	11.28	-23.29%
El Salvador	151.82	2.43	1.60%	5.19	61.80%
Mexico	148.85	0.80	0.54%	0.95	7.75%
Sri Lanka	127.44	5.32	4.17%	3.36	198.35%
Malaysia	126.62	0.91	0.72%	1.48	13.00%
Spain	114.01	4.67	4.09%	6.11	-17.76%
Czech Republic	112.05	6.38	5.69%	6.29	-5.42%
France	100.25	19.41	19.36%	23.23	-3.16%
World Total	11970.47	1154.77	9.65%	1194.40	4.54%

**Table 1.6: Market Share (%) of top exporters in top Import markets :2012**

Top Importers	Total Import Mn USD	Top Exporters Share						
		India	China	Hong Kong	Korea, Rep.	Indonesia	Pakistan	Turkey
China	500.01	57.95	14.50	0.10	6.69	3.35	7.36	0.11
Hong Kong	284.25	12.81	74.05		3.69	1.33	4.95	
European Union	79.33	45.16	2.89		0.66	0.82	4.39	26.97
Korea Republic	49.42	54.75	25.87	0.05		8.97		
Turkey	26.44	14.01	0.36			7.64	1.99	
Russian Federation	8.77	82.38	1.83				0.24	0.14
Japan	27.29	18.63	11.88		9.65	35.96		1.29
Germany	18.26	38.28	0.64			0.44	1.16	21.82
Egypt	1.08	88.02	0.00				0.00	
Guatemala	19.34	37.63	0.73		4.74		1.28	
Portugal	16.83	70.79	0.01		1.57	2.61	3.62	3.13
United States	7.07	20.21	1.15		52.95	1.84	0.01	
El Salvador	2.43							
Mexico	0.8	39.89						
Sri Lanka	5.32	67.81	0.01		32.12			
Malaysia	0.91	30.13	1.43	2.59				
Spain	4.67	44.33				2.56		2.88
Czech Republic	6.38	24.58	0.61			0.00	2.08	11.94
France	19.41	19.81	0.14			0.00	0.44	14.37

**Table 1.7- UVR of Top Exporters in top import destinations: 2012**

Top Importers below	India	China	Hong Kong	Korea, Rep.	Indonesia	Pakistan	Turkey
China	3.58		4.01	3.89	3.78	3.64	6.56
Hong Kong	3.62	4.07		3.91	4.02	3.67	
European Union							
Korea Republic	3.75	5.08	4.15		3.86	4.82	
Turkey		8.31			5.37	3.11	
Russian Federation	4.05						5.94
Japan	4.15	6.54	8.03	4.45	4.51	6.65	8.91
Germany	3.72	4.00				4.20	4.45
Egypt	3.77	5.88	6.44	4.05	4.31	3.76	4.50
Guatemala	3.73	5.59	4.46	4.32	4.09		
Portugal	3.66	6.16		3.83	4.14	5.75	4.32
United States		3.96		3.84	4.72	4.53	
El Salvador							
Mexico	3.04						
Sri Lanka	3.98	4.61	6.16	4.09	4.18		
Malaysia	3.62	4.73	4.77	3.96	4.02	4.28	
Spain	3.54				4.19		4.64
Czech Republic	3.63				6.23		4.51
France	3.82	4.00					7.07

**Table 1.8- Top exporters CAGR in Top importers market (2004-2012)**

Top Importer	Top Exporters													
	India	China	Hong Kong	Korea, Rep.	Indonesia	Pakistan	Turkey	Thailand	Germany	Greece	United States	Italy	European Union	Belgium
China	96.89%		-6.63%	21.92%	-2.92%	34.31%	10.14%	16.37%			-100.00%	2.35%	1.76%	
Hong Kong	33.89%	3.44%		7.42%	-29.03%	11.50%		-2.51%				-27.63%	-27.64%	
Korea, Rep.	11.64%	14.41%	21.60%		-35.60%	-20.14%		16.49%				-100.00%	-100.00%	
Italy	1.27%	18.15%			-75.65%	-8.38%	5.71%	-14.46%	3.20%	-35.83%				-28.98%
Japan	16.34%	-3.45%	34.80%	1.27%	-20.87%	-9.37%		-9.07%				-43.60%	-23.03%	
Turkey	27.88%	3.55%			-37.72%	0.08%			-100.00%	-100.00%		-34.73%	-35.92%	
France	84.80%						35.94%		4.32%	-18.49%		-18.87%		-7.65%
Guatemala	36.37%	57.19%		18.84%	64.17%	-100.00%					-2.76%			
Germany	99.67%	79.50%				56.29%	47.69%	-100.00%		2.33%		-24.35%		30.36%
Portugal	50.64%	-30.99%			-1.13%	-16.12%	35.98%	-41.97%	38.79%	-25.02%		-24.60%		-1.69%
Colombia	97.37%	6.22%			-19.05%	-100.00%								
Peru	63.13%	-2.90%									-6.33%			
Indonesia	37.28%	3.37%		94.90%										
Brazil	126.86%	-100.00%			-26.50%							-100.00%	-100.00%	

**Table 1.9-Top exporters RCA in 520524 in the world (2004-2012)**

Top Exporters	2004	2005	2006	2007	2008	2009	2010	2011	2012	Analysis
India	0.98	0.62	1.05	2.08	1.86	2.19	2.34	2.87	3.40	RCD to RCA (2006)
China	1.56	1.44	1.59	1.44	1.54	1.47	1.14	1.07	0.83	RCA to RCD (2012)
Hong Kong	3.15	3.19	3.15	2.63	2.91	2.85	2.87	2.75	2.44	All time RCA
Korea, Rep.	1.53	1.88	1.03	1.31	1.41	1.46	2.45	3.64	3.83	All time RCA
Indonesia	NA	NA	NA	NA	NA	NA	3.32	3.94	2.71	All time RCA (2010)
Pakistan	0.32	0.45	0.32	0.57	0.50	0.60	0.35	0.51	0.30	All time RCD
Turkey	0.60	0.74	1.17	0.65	0.66	0.43	0.38	0.69	0.86	All time RCD
Vietnam	NA	NA	0.45	0.73	1.29	1.78	2.38	1.71	1.62	RCD to RCA (2008)
Thailand	2.69	3.53	2.41	1.84	1.73	1.52	1.27	1.46	1.91	All time RCA
Germany	0.45	0.50	0.58	0.50	0.54	0.50	0.55	0.61	0.64	All time RCD
Greece	1.64	1.85	1.75	2.34	1.86	1.00	1.04	1.88	0.69	RCA to RCD (2012)
United States	0.10	0.09	0.06	0.09	0.13	0.07	0.05	0.07	0.05	All time RCD
Italy	0.57	0.44	0.46	0.51	0.44	0.35	0.25	0.35	0.21	All time RCD
European Union	0.21	0.13	0.11	0.12	0.12	0.10	0.09	0.15	0.10	All time RCD
Belgium	0.61	0.66	0.49	0.64	0.76	0.51	0.52	0.65	0.52	All time RCD

**Table 1.10-UVR of Top exporters in 520524 in the world (2004-2012)**

Top Exporters	2004	2005	2006	2007	2008	2009	2010	2011	2012
India	2.94	2.79	2.95	2.94	3.25	2.87	3.35	4.55	3.70
China	2.97	2.68	2.91	2.97	3.09	2.85	4.03	6.02	4.28
Hong Kong	3.01	2.68	2.80	2.82	2.96	2.80	3.71	4.93	4.02
Korea, Rep.	3.38	3.10	3.25	3.07	3.31	3.08	4.36	5.18	4.20
Indonesia	NA	NA	NA	NA	NA	NA	3.85	5.32	4.20
Pakistan	2.65	2.50	2.61	2.74	2.98	2.66	3.97	4.85	3.74
Turkey	4.06	3.37	3.55	4.11	4.28	3.73	4.59	6.11	4.65
Thailand	3.29	3.14	3.33	3.22	3.50	3.03	4.45	5.39	4.27
Germany	4.69	4.16	4.50	4.79	5.77	5.37	5.68	8.02	6.61
Greece	4.46	3.45	3.88	4.31	4.43	3.97	4.46	7.62	5.34
United States	4.55	4.50	4.70	5.11	3.34	4.19	5.44	8.17	6.87
Italy	5.66	5.20	5.50	5.76	6.06	6.08	6.15	9.18	8.22
European Union	5.39	4.57	5.65	5.87	6.02	5.15	6.43	8.23	6.80

## VIII. Target countries for Export

Importing Countries	2004	2005	2006	2007	2008	2009	2010	2011	2012	CAGR
China	24.59	52.04	131.73	164.23	159.30	222.53	305.35	309.76	500.01	45.72%
Turkey	20.44	22.07	46.27	132.61	90.08	46.97	114.34	57.06	26.44	3.27%
Guatemala	0.02	0.35	0.01	0.37	0.34	1.15	8.08	17.01	19.34	138.28%
Colombia	6.68	2.65	3.92	5.85	5.76	6.00	14.51	18.12	14.30	9.98%
Peru	3.07	5.25	6.51	10.07	12.26	6.79	10.72	12.66	11.91	18.47%
Indonesia							4.63	7.34	11.56	58.00%
Brazil	0.09	1.04	4.71	7.50	21.26	13.31	26.37	15.16	10.94	83.36%
Thailand	5.56	7.56	6.97	6.14	7.63	4.04	13.13	11.96	9.10	6.35%
Russian Federation	0.39	0.44	3.39	6.05	5.84	2.44	2.67	3.27	8.77	47.70%
Poland	2.70	2.27	4.53	5.04	6.06	4.64	7.16	7.07	6.12	10.77%
Sri Lanka	0.00	0.08	0.10	0.18	0.03	0.15	0.47	4.30	5.32	198.35%
Argentina	1.03	1.27	1.43	1.24	1.76	1.63	2.40	2.57	3.24	15.34%
India		0.05	0.92	0.12	0.38	0.14	0.74	3.06	2.72	78.40%
Belarus	0.31	0.32	0.38	0.78	1.17	0.95	2.32	2.99	2.50	29.68%
El Salvador	0.05	0.01	0.38	1.13	3.00	2.43	6.38	6.77	2.43	61.80%
Bosnia & Herzegovina	0.32	0.08	0.07	0.00	0.06	0.14	0.88	2.61	1.78	23.81%
Bulgaria	0.49	0.32	0.64	0.67	1.03	0.36	1.61	2.20	1.52	15.29%
Ukraine					0.95	0.56	0.73	0.99	1.12	4.17%
Egypt, Arab Rep.					1.03	0.92	0.95	0.34	1.08	1.25%
Madagascar	0.06	0.10	0.27	0.29	0.11	1.28	1.03	2.72	1.00	42.18%
Malaysia	0.34	0.35	0.49	0.30	0.71	0.92	1.90	1.64	0.91	13.00%
Mexico	0.44	0.48	1.35	0.38	0.68	0.45	0.67	1.39	0.80	7.75%
Slovak Republic	0.72	0.57	0.18	0.26	0.21	0.58	0.29	0.78	0.75	0.62%
Yugoslavia		0.22	0.29	0.39	0.63	0.37	0.54	0.71	0.55	14.39%
Algeria	0.07		0.04			0.05	0.24	0.24	0.51	28.22%
Dominican Republic						0.17	0.67	0.90	0.50	42.97%
Macedonia, FYR	0.19	0.13	0.08	0.15	0.10	0.16	0.08	0.31	0.19	0.16%
Ecuador	0.02				0.04	0.20	0.10	0.19	0.07	16.00%
Bolivia	0.00	0.07	0.14	0.09	0.08	0.03	0.67	0.04	0.00	11.98%

## IX. Findings

- 520524 belong to the combed cotton yarn segment having cotton content more than 85% and a count of 30.73-47.28. It has a percentage share of 9.65% in total cotton yarn imports in the world.
- The total export value of this product in the world is 1468.63 Mn USD (2012) and the total import value is 1154.77 Mn USD (2012).
- Major exporters of 520524 include India, China, Hong Kong, Korea, Indonesia, Pakistan etc.
- Major importers include China, Hong Kong, Italy, Korea, Italy, Japan, Turkey etc.
- Hong Kong, Korea and Thailand enjoy an all time RCA in this product. India and Vietnam have moved from RCD to RCA in 2006 and 2008 respectively.
- The target countries for export of this product include China, Turkey, Columbia, Guatemala, Peru, Brazil, Indonesia, Thailand etc.